

Cabin Open/Close Instructions

Open Procedure:

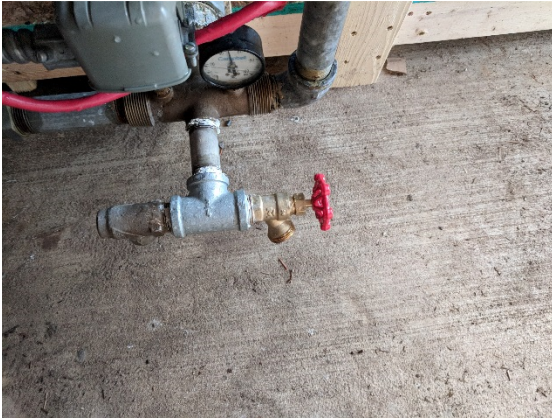
- Turn on breakers for lights. **Do not turn on water heater or pump breakers yet.**
- Open block valve to toilet. (May have been left open)
- Turn bathroom sink faucets off.
- Close drain valves to bathroom sink.
- Open block valves to bathroom sink. (May have been left open)
- Turn bathtub faucets off.
- Close drain valves to bathtub.
- Open block valves to bathtub. (May have been left open)
- Turn kitchen sink faucets off.
- Close drain valves to kitchen sink.
- Open block valves to kitchen sink. (May have been left open)
- Close red spigot outside next to well.
- Open well valve in white PVC next to spigot.
- Install water filters.



- **Close washer line drain valves.**



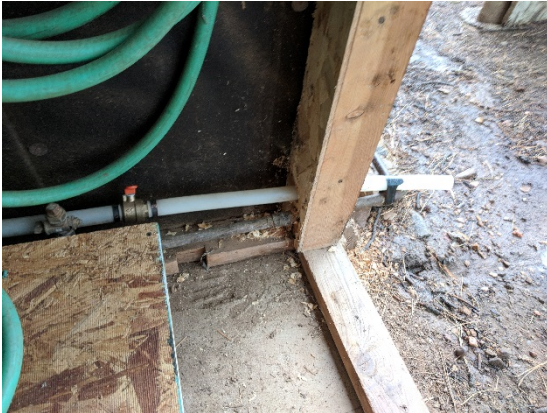
- **Close pressure tank drain valve.**



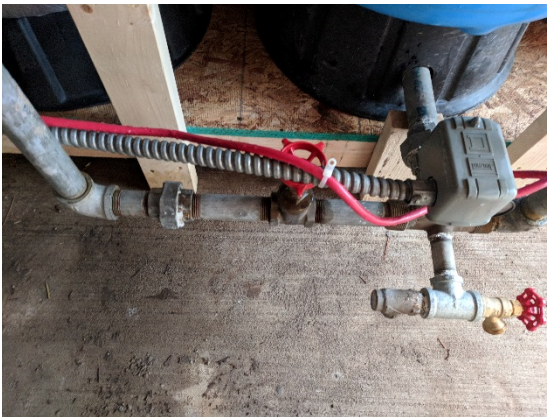
- **Close heater drain valve. (Requires a flat head screw driver)**



- **Close settling tank drain valve almost all the way. (Allows the system to flush sediment)**



- **Close filter block valve.**



- **Turn on pump in breaker box to allow sediment to flush. **Water heater breaker should remain off.****
- **Close settling tank drain valve once water is no longer muddy.**
- **Open heater pressure relief.**



- **Open filter block valve.**
- **Open heater block valve. (May have been left open)**



- **Allow heater to fill.**
- **Close pressure relief once water begins to pour out.**
- **Turn on water heater breaker. **Never power the water heater before the tank is full or the elements can burn out.****
- **Turn on water heater local power switch.**

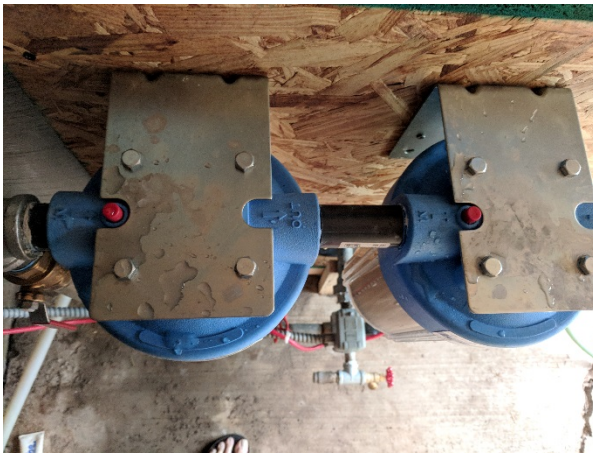


- **Check that gas wall heaters gas supply valves are off. (**Only the heater in the living room is safe to use**).**
- **Turn on propane at tank.**
- **Light pilot lights on stove.**
- **Light pilot light for oven.**
- **Turn on valve and light wall heater pilot light if you are planning to use.**
- **Install battery in smoke detector.**

- **If cabin hasn't been used in a while pour half a box of rid-x into toilet and flush.**
- **Open settling tank drain valve slightly every day to flush system.**
- **Close once water is no longer muddy.**

Close Procedure:

- **Turn off gas at propane tank.**
- **Turn off well pump and water heater breakers.**
- **Turn off water heater local power switch.**
- **Attach hose to pressure tank and run into yard.**
- **Open pressure tank drain valve.**
- **Open hot water tank pressure relief valve.**
- **Place hose from hot water tank into yard.**
- **Open hot water tank drain valve. (Requires a flat head screw driver)**
- **Open settling tank drain valve.**
- **Remove water filters and grease gaskets. (Depress red pressure relief button on filter housing to make removal easier)**



- **Open washer line drain valves.**
- **Open red spigot.**
- **Close main well valve.**
- **Turn on kitchen faucets.**
- **Open kitchen sink drain valves.**
- **Pour anti-freeze into kitchen sink.**
- **Turn on bathroom sink faucets.**
- **Open bathroom sink drain valves.**
- **Pour anti-freeze into bathroom sink.**

- **Turn on bathtub faucets.**
- **Open bathtub drain valves.**
- **Pour anti-freeze into bathtub.**
- **Flush toilet.**
- **Pour anti-freeze into toilet reservoir.**
- **Pour anti-freeze into toilet bowl and plunge into p-trap.**
- **Dry refrigerator shelves and leave door propped open.**
- **Turn off all remaining breakers.**

Water system installation by Joe Thomas Plumbing 575-741-0353